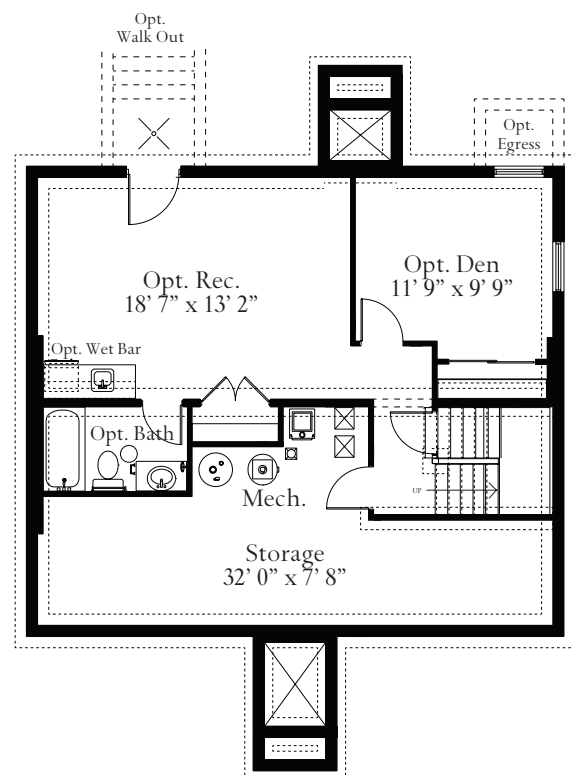
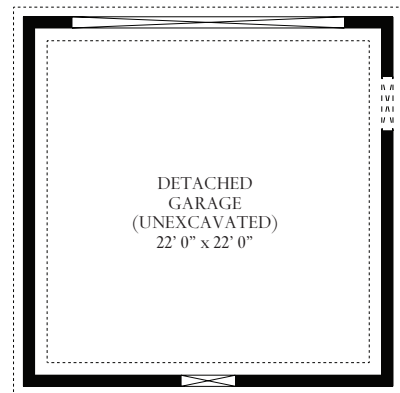
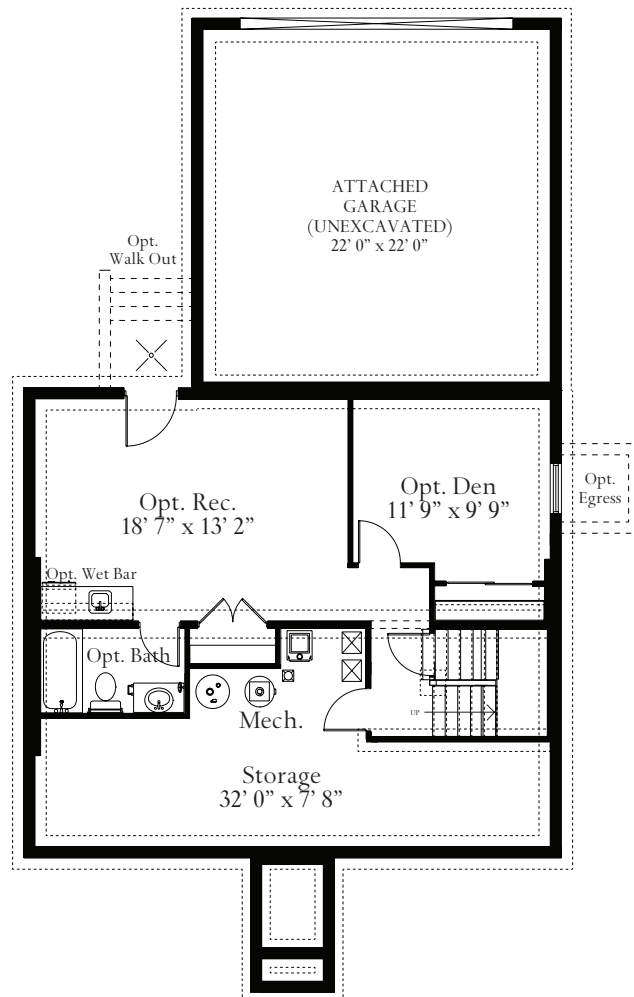


The Jackson

LOWER LEVEL



Opt. Finished Foundation Plan with Detached Garage



Opt. Finished Foundation Plan with Attached Garage



{ Craftsman with Dormers, Portico and Stone to Grade }



{ Craftsman with Gable, Full Porch and Stone to Grade }



{ Craftsman with Gable, 3/4 Porch and Stone to Grade }



{ Eastern Seaboard with 3/4 Porch, Dormers, Shutters and Stone to Grade }

Optional features may be shown on the drawings

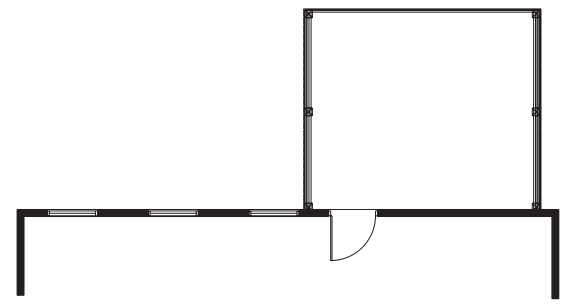
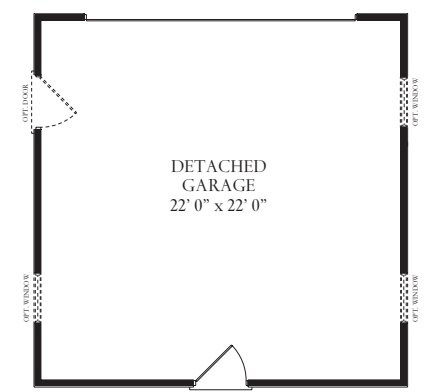
The Jackson is as practical as it is luxurious, with spacious openness in all the rooms that matter to your lifestyle. With a large Dining Room, open to the Great Room, entertaining is easy in The Jackson. A large kitchen, complete with pantry and an oversized island, is the perfect gathering spot for the whole family. Just off of the foyer is the Library, a perfect space for a small desk to organize the family calendar. Upstairs, the Master Suite includes a large bedroom and bath, complete with double vanities, oversized shower with seat, linen closet and walk in closet. Two additional bedrooms are on the upper level, along with a hall bath and generously sized laundry room. The lower level can be finished to include a Rec Room, Den, Full Bath and Wet Bar. A Two-Car Garage is available as an option. The Jackson starts at just under 1800 square feet.

ATLANTIC BUILDERS
GIVING YOU MORE

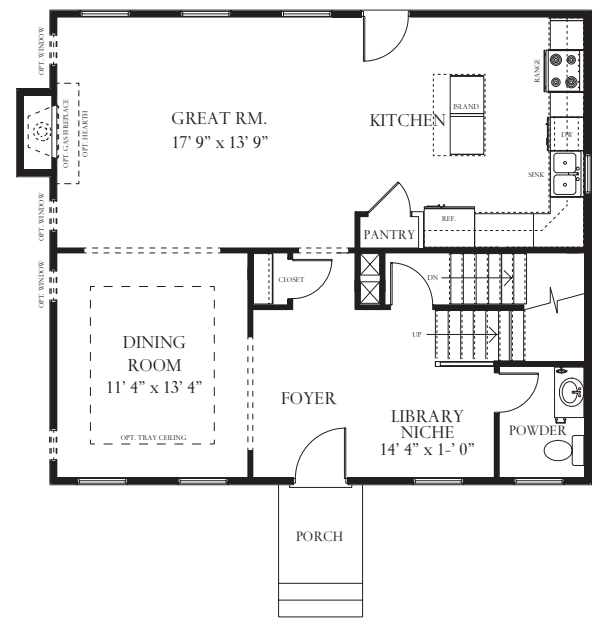


ATLANTIC BUILDERS
GIVING YOU MORE

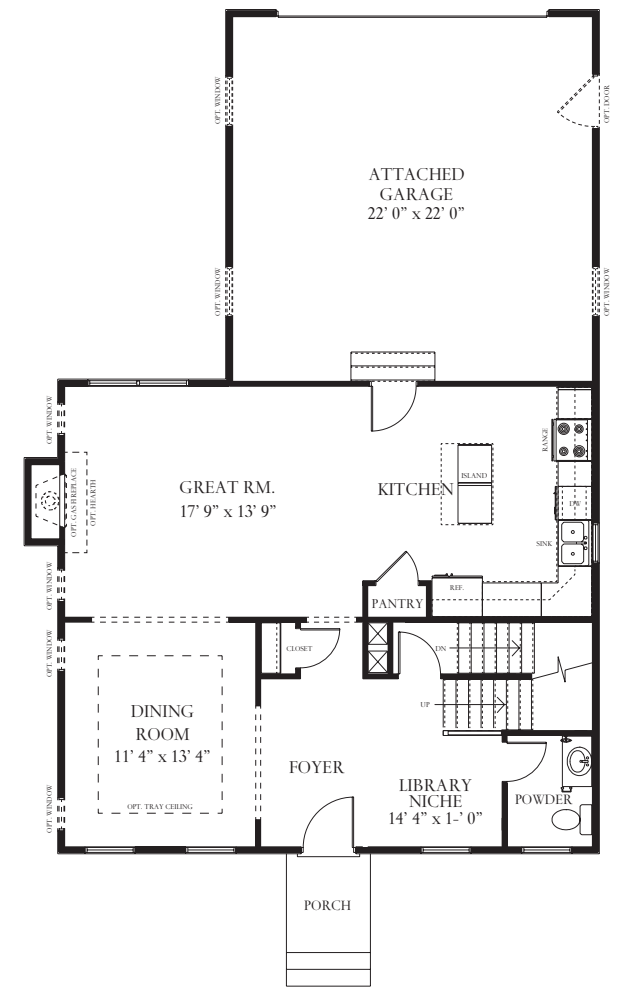
MAIN LEVEL



Opt. Screened Porch

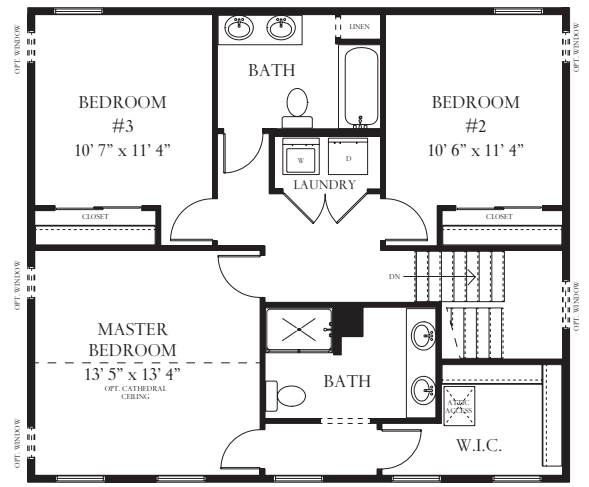


First Floor Plan with Detached Garage



First Floor Plan with Attached Garage

UPPER LEVEL



Standard Second Floor Plan

These renderings and floorplans are conceptual only. Actual details may vary. This insert is for illustrative purposes only. Atlantic Builders' continuing research and development program means specifications and plans are subject to change without notice. Standard features vary per community. Please consult Community Sales Manager for details.